

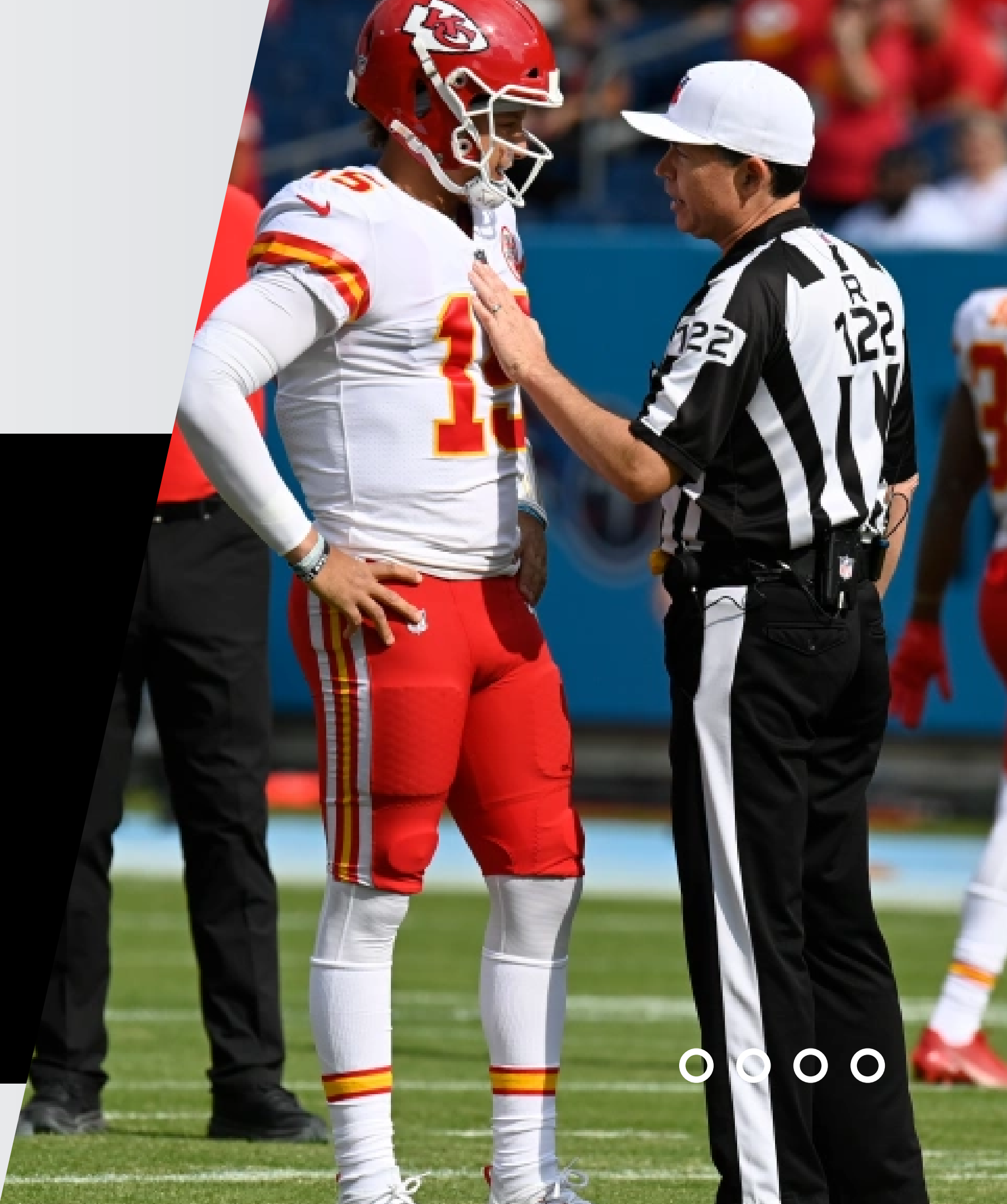
NEW JERSEY FOOTBALL OFFICIALS ASSOCIATION

PENALTY ENFORCEMENT



TABLE OF CONTENTS

- Handling Fouls
- Reporting Fouls
- Mechanics
- Definitions
- Tips
- All but One*
- Special Enforcements



HANDLING FOULS ON THE FIELD

Spot Foul

If it is a spot foul, flag placement is important. Throw overhand. No kicking.

Multiple Flags

Get together **BEFORE** reporting to the referee.

O2O

When reporting, get on O2O, even if you are with the Referee so the whole crew can hear.

REPORTING FOULS TO THE REFEREE

- Result of the play.
- During the run, the kick, the pass.
- Preliminary Signal - except multiple flags.



ENFORCEMENT MECHANICS

- Line Judge holds the enforcement spot.
- Head Linesman and Umpire
 - First, communicate to confirm.
 - Second, move together.
 - I.E. Measure twice, cut once.
- Head Linesman and Umpire AFTER moving, confirm AGAIN with Line Judge.
- Field Judge and Side Judge, confirm at a distance, silently to ensure accuracy. Dead ball officiating. See something, say something.



- **COMPLETE ALL OF THIS BY THE TIME THE REFEREE COMPLETES THE ANNOUNCEMENT. WHEN THE REFEREE IS DONE, THE CREW AND GAME MUST BE READY TO GO.**

PENALTY ENFORCEMENT DEFINITIONS

LOOSE BALL PLAY

Action during a kick, other than PSK, legal forward pass, backward pass, illegal kick, fumble by team A in or behind the neutral zone PRIOR to a change of team possession.

Basic Spot

Previous spot.

RUNNING PLAY

Action that is not included in a loose ball play.

Basic Spot

End of the run.

PENALTY ENFORCEMENT DEFINITIONS - PSK

- Post Scrimmage Kick Foul - PSK
- Foul by R which occurs...
 - During a scrimmage kick play other than a try or a successful Field Goal.
 - During a scrimmage kick play in which the ball crosses the expanded neutral zone.
 - Beyond the expanded neutral zone.
 - Before the end of the kick.
 - K will NOT be the next to put the ball in play.
 - Basic spot is end of the kick.



PSK CONTINUED

DETERMINING PSK

Was the foul committed by R, beyond expanded neutral zone?

DETERMINING PSK

Did the foul occur during a play, in which a scrimmage kick crossed the expanded neutral zone?

DETERMINING PSK

Did the foul occur prior to the end of the kick?

DETERMINING PSK

Is R next to put the ball in play?

DETERMINING PSK

IF YOU ANSWER "NO" TO ANY OF THESE, YOU DO NOT HAVE A PSK FOUL

ENFORCEMENT TIPS

- Only one loose ball play during a down.
- Can have multiple running plays during a down.
- During a scrimmage kick down you CAN have the following:
 - Loose ball play
 - Running Play (even multiple)
 - PSK Enforcement
 - Multiple fouls during one or all of the above.
- MUST know WHEN the foul occurred.
- Reporting is critical.



All But One Principal

Even though it has been removed from the book, it still applies!

The all but one tells us that all fouls are enforced at the basic spot with the exception of a foul by the team in possession behind the basic spot.

New 2023

If the foul occurs behind the previous spot, the penalty is enforced from the previous spot

If the run ends behind the previous spot, the penalty is enforced from the previous spot

EXCEPTIONS:

- Illegal forward pass
- Intentional Grounding
- Foul by A in the End Zone
- Illegal Participation

BASIC SPOT

- Foul committed by the team in possession behind the basic spot

BASIC SPOT

- Foul committed by the team not in possession
 - Beyond or Behind the basic spot

SPOT OF THE FOUL

- Foul committed by the team in possession behind the basic spot



SPECIAL ENFORCEMENTS

- Free kick out of bounds untouched by R
 - 5 yards and re-kick
 - R 25 yards from previous spot
 - R 5 yards from the inbounds spot
 - R at the inbounds spot (decline penalty)
- Kick Catching Interference
 - 15 yards from the spot of the foul
- Foul by the opponent of the scoring team on a successful try or field goal
 - Remove the points and replay try/down after enforcement
 - Accept the points, enforce at succeeding spot



SPECIAL ENFORCEMENTS

- Foul by K during a legal free or scrimmage kick down
 - R has the option to enforce the penalty at the previous spot or succeeding spot if R has the ball at the end of the down
- Fouls that occur during or after a TD scoring play
 - Enforce on the try or subsequent free kick
- Roughing the Passer
 - 15 yards and an automatic FD at the dead ball spot when the dead ball spot is beyond the previous spot AND the ball belongs to A and there has been no change of possession during the play.
 - 15 yards and auto first down from the previous spot



A 1/10 @ A'S 20 YARD LINE. A1 DROPS BACK TO PASS AND IS SACKED AT THE A-18. A77 IS FLAGGED FOR HOLDING AT THE A-16

- What is the Line to Gain?
- What is the result of the play?
- What type of play is this?
- What is the basic spot?
- Who committed the foul?
- Where did the foul occur?
- Where do we enforce from?
- What is the result of the enforcement?



